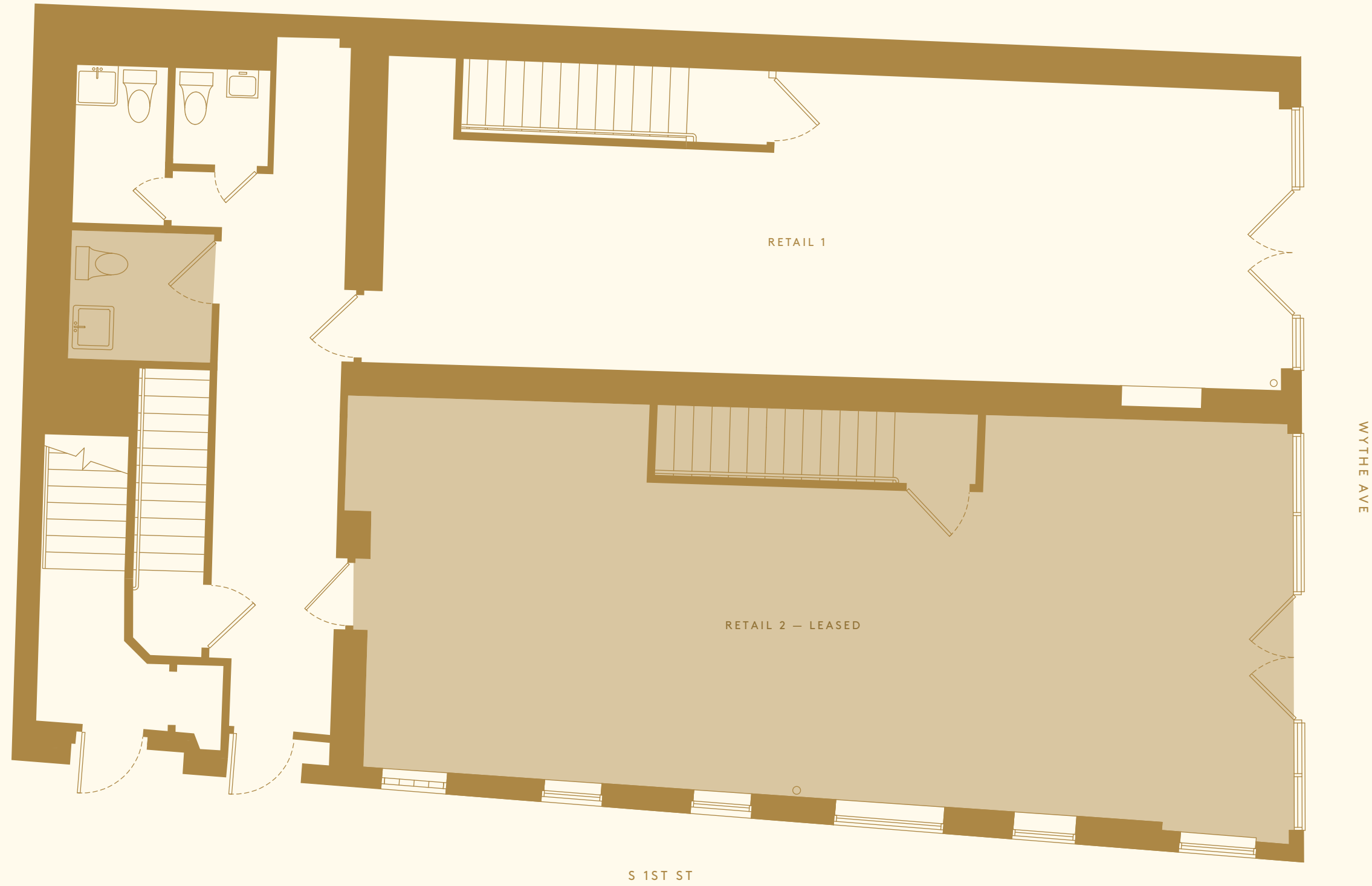
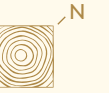
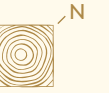


324 WYTHE AVENUE
WILLIAMSBURG
BROOKLYN, NEW YORK



FIRST FLOOR
RETAIL — 944 RSF AVAILABLE
CEILING HEIGHT — 11'-8"

324 WYTHE AVENUE
WILLIAMSBURG
BROOKLYN, NEW YORK



CELLAR
STORAGE — 968 RSF AVAILABLE
CEILING HEIGHT — 7'-6"